



April 19, 2013

## *Sweetwater Spotlight*

### First Annual Sweetwater District CTE "Internship Breakfast"

*Career Technical Education Students honored for their efforts*

The Sweetwater Union High School District recently held the First Annual Internship Breakfast. The event celebrated students and their internship placements all across the South Bay.



#### Sweetwater in Brief

- **Community Bridge Dedication at BVM**
- **Mariachi Scholarship Foundation Honors Students & Teachers**
- **KMMI Students Out and About in San Diego**
- **Sweetwater STEAM Summit**



As part of the Career Technical Education Department and their effort in the Middle School/High School Re-Design, students from across the Sweetwater School District have been placed in internships during the 2012-2013 school year.

These internships range across several industries and provide students with an opportunity to apply their learning to a hands-on situation. They work with professionals in their chosen career paths to observe, learn and prepare for their futures.

Sweetwater Superintendent Dr. Edward Brand spoke at the event as well as Board or Trustees member Pearl Quiñones. Dr. Brand said "We are proud of our Sweetwater students and their accomplishments."

This event featured over 50 industry leaders as well as recognition for over 350 students from across the Sweetwater District.

Community Bridge Dedication at

- Titan Dance Company Brings it Home, AGAIN!



*"We congratulate all the Sweetwater District students who continue to shine both in and out of the classroom"*

**- Jim Cartmill  
Sweetwater Board President**

### Save the Date

- **April 23 - School Bus Driver's Day**
- **April 25 - Environmental Film Festival Series - 6pm**
- **April 26 - District Color Guard & Drum Line Show - 6pm**
- **April 27 - Karangalan Magkaisa Student Conference - 7am to 2pm**
- **May 7 - Superintendent's Hotline (619) 691-5570 - 2:30pm - 4:30pm**
- **May 13 - Board of Trustees**

## Bonita Vista Middle School

Bonita Vista Middle School recently hosted an inauguration event to commemorate a new pedestrian foot bridge that connects the community with athletic fields.



The athletic fields at Bonita Vista Middle School are utilized by the entire community. Most notably, are local American Youth Soccer Association (AYSO) teams that play their games on the fields of Bonita Vista Middle.

"This bridge is an important symbol of our partnership with the community," said Board or Trustees member Jim Cartmill. "This renovation and inauguration was long overdue."

The pedestrian bridge is located at Bonita Vista Middle School along Ridgeback Road (near athletic fields).

Meeting - 6pm



## Mariachi Scholarship Foundation Honors Students and Teachers

On April 11, 2013, the Mariachi Scholarship Foundation distributed \$17,500 in college scholarships to 18 students of the Sweetwater District, including three graduating students from Southwestern College.

The Mariachi Scholarship Foundation was established 17 years ago by Robert Griego, former Sweetwater District Board Member. Over the past 17 years, more than \$300,000 has been distributed by the foundation.

To be eligible for a Mariachi Foundation scholarship, students must carry a 3.0 GPA and must have participated in the Sweetwater District's Mariachi in the Schools Program for two





**Community Bridge Inaugurated at Bonita Vista Middle**

## KMMI Students Out and About in San Diego

KMMI students recently visited the San Diego Union Tribune to speak with Pulitzer-prize winning UT Editorial cartoonist and KMMI mentor, Steve Breen.

years, including their graduating year.

As part of evening's celebration, a concert was given by Four Amigos - Keith Ballard, Mark Fogelquist, Jeff Nevin and Gill Sperry - and the foundation honored Mark Fogelquist, Mariachi Instructor of Mariachi de Chula Vista on his retirement from the Sweetwater Union High School District.





Breen spent time discussing the cartoon that would appear in the newspaper the following day and answering questions from curious KMMI Mentees. The attending students are all aspiring editorial cartoonists.

The group of aspiring journalists from Montgomery High School also took a trip to the Mingei Museum of Art.

They can be seen pictured speaking to docent Martha Ehringer and posing in front of the Niki de Sainte-Phalle Sculpture. Ehringer, Mingei Museum's PR director, has been a KMMI mentor and actively engaged at MOH since 2001.

**SUHSD STEAM Summit - May 6**



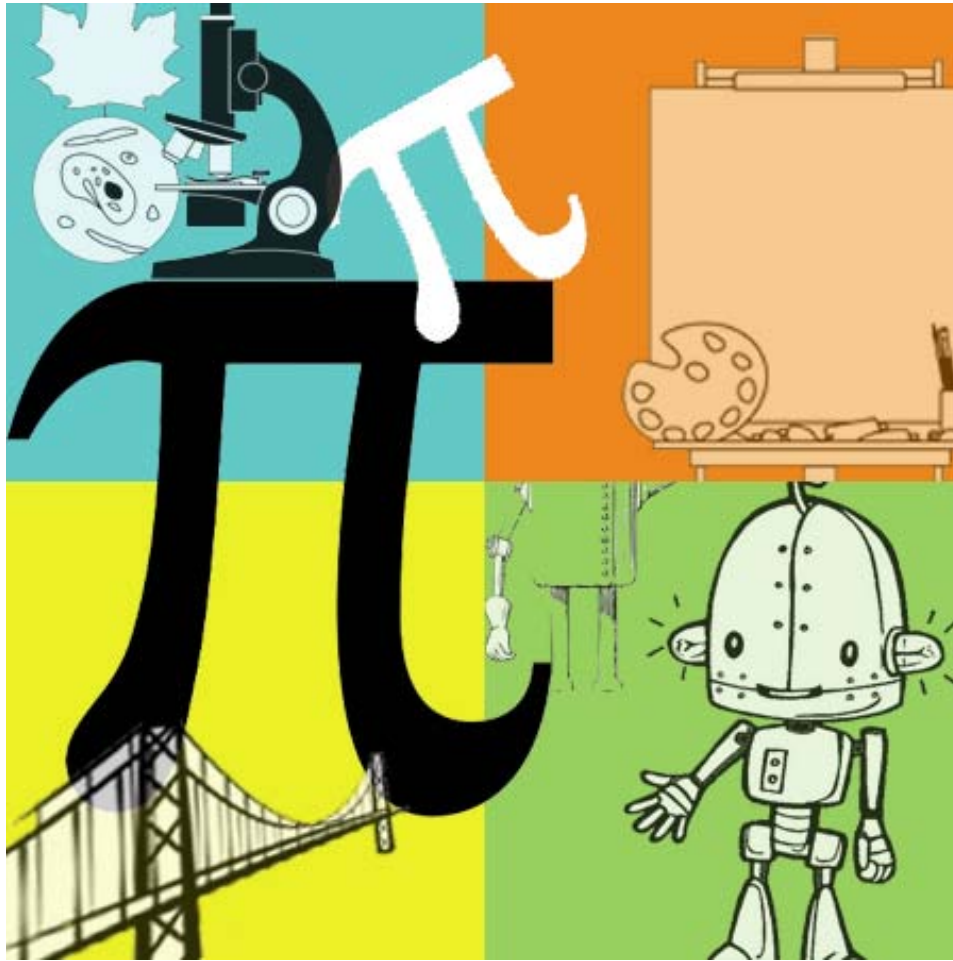
 Join Our Mailing List

**SAVE THE DATE**

***School Bus Driver's Day is April 23***

Take a moment to thank your local school bus driver for all their dedication to getting our youth to and from campus safely. We really appreciate our Sweetwater School Bus Fleet!

***Environmental Film Festival Series - EARTH -***



Sweetwater Union High School District is pleased to present the first annual STEAM (Science, Technology, Engineering, Arts and Math) Summit on May 6, 2013. The purpose of the STEAM Summit is to recognize, highlight, and promote STEAM learning and innovation in SUHSD.

The Summit will also showcase the use of iPads by teachers and students in middle schools as well as the use of iPads in school robotics programs, the Mayor's Cup Cyber Challenge and Visual and Performing Arts projects integrating art, music, and technology.

### **April 25**

Thursday, April 25th, 6:00 -8:00 pm - Environmental Film Festival Series: Enjoy popcorn and an environmentally-themed movie and follow-up discussions with experts. At the Otay Ranch Library Food Court: 2015 Birch Road, Chula Vista.

### **District Color Guard & Drum Line Show - April 26**

Friday, April 26 at 6:00 p.m.  
Location: Eastlake High's Gymnasium (1120 Eastlake Parkway, Chula Vista, 91915)  
Featuring SUHSD's Colorguards, Drumlines and special guests.  
Tickets: \$5.00

### **Karangalan Magkaisa Student Conference - April 27**

Saturday April 27th - 7:00 am to 2:00 pm at Olympian High School.  
Keynote Speaker: American Idol's Marvin Calderon Jr. See [www.magkaisahsc.blogspot.com](http://www.magkaisahsc.blogspot.com) for more information.

### **Superintendent's Hotline - Tuesday May 7**

Dr. Brand is accepting calls at the Superintendent's Hotline. If you have a suggestion or concern, call (619) 691-5570 between 2:30 and 4:30 p.m. to talk directly with the superintendent. The hotline is open the first Tuesday of every month.



This event is FREE for the entire community including families and students who will enroll in SUHSD for the first time in July.

[Click Here to Register for this event.](#)

## Titan Dance Company Brings it Home, AGAIN!



Eastlake High School took high honors at their annual trip to the Tremaine Dance Convention in Los Angeles this past weekend.

The male dancers brought home the first place high score overall and they got to perform a second time in the Faculty show on closing night with talents of Tiffany and Cyrus from "So You Think You Can Dance!"

Their other dance numbers took home five First Place awards and one Second Place:

## **Board of Trustees Meeting - May 13**

6:00pm - 10:00pm -1130 Fifth  
Avenue Chula Vista, CA 91911

Emily Rosario-First Place Solo/one year scholarship to Tremaine Conventions;

Rebecca Robinson- Second Place for her solo and she won a scholarship to a week-long intensive in Orlando, FL this summer in the audience voted-on FREESTYLE battle, which was a FIERCE battle between guys and girls and came down to Rebecca and Ethan Evaro;

Janelle Adviento-Third Place for her solo and also received a year-long scholarship to Tremaine Conventions;

Denzel Eusebio- received a scholarship to the Edge in Los Angeles.

Kristin Greenway-August said "It was an inspiring and incredible weekend for the dancers!" Greenway directs ELH Dance Program.

[Forward this email](#)



This email was sent to [gcomm@sweetwaterschools.org](mailto:gcomm@sweetwaterschools.org) by [gcomm@sweetwaterschools.org](mailto:gcomm@sweetwaterschools.org) | [Update Profile/Email Address](#) | Instant removal with [SafeUnsubscribe™](#) | [Privacy Policy](#).

Sweetwater Union High School District | 1130 Fifth Avenue | Chula Vista | CA | 91911



Try it FREE today.